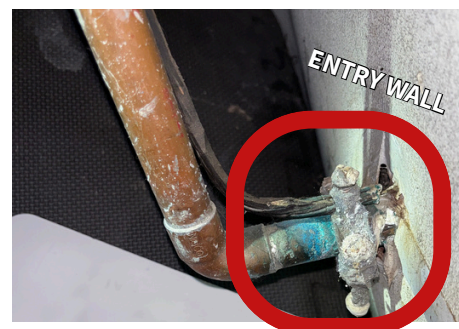


The Northern Kentucky Water District needs your help identifying the type of pipe material used for your water service line, which is the pipe that brings water from the water main into the building.

FOLLOW THESE 3 STEPS TO IDENTIFY & REPORT YOUR SERVICE LINE MATERIAL:

Step 1: Locate the water service line entering the building. The pipe may be visible where it enters through a basement wall (or sometimes through the floor). Take a picture of your water service line as it comes into your house (circled in red in the picture on the right).

Step 2: Use the information below to identify the type of pipe. Use a coin or key to carefully scratch the outside of the pipe. Use a strong refrigerator magnet.



LEAD

Outer Pipe Color: Dull gray

Scratch Test: Turns shiny silver

Magnet: Does not stick



PLASTIC

Outer Pipe Color: May be black, red, blue or white

Scratch Test: No need to scratch

Magnet: Does not stick



COPPER

Outer Pipe Color: Brown and can turn green

Scratch Test: Looks like a penny

Magnet: Does not stick



GALVANIZED

Outer Pipe Color: Dark gray or black

Scratch Test: Hard to scratch and remains same color

Magnet: Magnet will stick

Step 3: Submit your service line material using one of the following methods



- Online form submittal at **nkywater.info/submitmaterial** (or scan QR Code)
- Email material type and picture to **SLI@nkywater.org**
- Phone call to **(859) 578-5451**

If you are having difficulty identifying or submitting your material type, please contact us and our team can help.

Information provided herein may be subject to disclosure under the Kentucky Open Records Act.